



Isikhokelo soMninimhlaba:

Ungquzulwano phakathi kwabantu
nezilwanyana zasendle

Izisombululo ezisengqiqweni zokuphila nezilwanyana zasendle





Isikhokelo soMnimhlaba: Ungquzulwano phakathi kwabantu nezilwanyana zasendle

Izisombululo ezisengqiqweni zokuphila
nezilwanyana zasendle

"...the Cape Province is largely subdivided into farms and consequently the farm has become the habitat of surviving forms of wildlife. Wildlife conservation can, therefore, only be effective with the support and good will of the farming community. The South African farmer, the descendent of pioneering stock, is a rugged individualist and the master on his own property. Conservation measures cannot be enforced, they can only be introduced on a basis of cooperation and mutual understanding."

Dr Douglas Hey (1964), owayesayakuba ngumphathi weSebe loLondolozo lweNdalo kwiPhondo leKapa



Iziqulatho



Intshayelelo	3
Ungquzulwano phakathi kwabantu nezilwanyana kunye nentsebenziswano	4
Indima yezilwanyana zasendle kummandla weefama	5
- Izilwanyana zasendle zibonelela ngeenkonzo zenkqubo yendalo	5
- Indima yukubangamagosa endalo yezilwanyana ezizingelayo	5
Imigaqo egqibeleleyo yokunciphisa amathuba ongquzulwano	6
Ungquzulwano olunokubakho eNtshona Kapa	7
Izilwanyana ezitya izityalo nezilwanyana ezitya izinambuzane	
Inyamakazi	8
Amalulwane	9 - 10
Iincanda zeKapa	10 - 11
Izilwanyana ezitya izityalo nenyama	
Iimfene neenkawu (ezibizwa ivervet monkeys)	12 - 13
IiHoney badger	13 - 14
Ibushpigs	15 - 16
Izilwanyana ezitya ezinye	
Oodyakalashe omqolo-mnyama	16 - 17
Iingcuka ezimdaka	18 - 19
Iintini zeKapa	19 - 20
Iingqawa	21 - 22
Iingwe	23 - 24
Ezinye izilwanyana ezithi zingquzulane nabantu	25

Iingcamango eziphangaleleyo zokulwa nongquzulwano nezilwanyana ezizingelayo	26
Ukuhlola imizimba: okuphawula unobangela wokufa	26
Itheyibhile I- limpawu zezilwanyana ezizingelayo	27
Iindlela namacebo okunciphisa iingxaki	28
1. Iindlela zokuthintela umonakalo	28
2. Iindlela zokulungisa umonakalo	32
Ukusebenzisana nomthetho	34
Izixhobo ezongezelelweyo	35
Iinkcukacha eziluncedo	36
Iimithombo	37
Umbulelo	37
Isibhengezo	38





Intshayelelo

Indalo kwimo yayo ecocekileyo igqibelele— isityalo, ifangasi, nesilwanyana ngasinye sinendima yaso ethile kwaye ziyinxalenye yenkqubo yendalo ethungelanayo. Le nkqubo yendalo ibonelela ngeenkono ezibalulekileyo zobomi, ezibandakanya amanzi acocekileyo, ukwabelana ngembewu kwezityalo, umhlaba osezingeni eliphezulu kunye nezinye – zonke ezi zinto zifunwa ngabantu ukuze bakwazi ukusebenza umhlaba, bavelise ukutya kwaye baphumelele. Ekugqibeleni, ukuqhubeka kwezi nkonzo zendalo kunye nozinzo lwezinto zendalo kuxhomekeke kwizinto ezintlobo zezilwanyana ezahlukileyo kunye nentsebenziswano phakathi kwazo, eyaziwa njengeentlobo ngentlobo zezinto eziphilayo (biodiversity). Nangona kunjalo, umhlaba ngowabantu nezilwanyana zasendle kwaye kwabelwana ngawo rhoqo. Olu lwabelwano lukhokelela kungqzulwano ngamanye amaxesha, kuba iimfuno zabantu nezilwanyana zasendle zahlukile kakhulu.

Emazantsi eAfrika, ezinye iintlobo zezilwanyana ezazisayakubizwa ngokuba “izilwanyana ezibangela ingxaki” okanye “izitshabalalisi.” Kangangeenkulungwane zeminyaka, uluntu oluxhomekeke kwezolimo belusenza iinzame “zokulawula” izilwanyana ezibangela umonakalo kwimfuyo yasefama okanye ezityalweni zabo. Nangona kukho ezi nzame, umonakalo usenzeka rhoqo, kwaye kwezinye iimeko ukulahleka kwezilwanyana ezifuywayo nezityalo kuyanda. Enyanisweni, olunye uphandolwazi lubonisa ukuba ukususela “izilwanyana ezibangela ingxaki” kudla ngokubangela iingxaki ezininzi nangaphezu koko, kwaye le ndlela inokuba yenye yezona zingasebenziyo ekunciphiseni ungqzulwano phakathi kwabantu

kunye nezilwanyana zasendle. Ukuqinisekisa ukuthintelwa konongekeli, okudibanisa iindlela ezahlukeneyo, kubalulekile ekulawuleni kwalo mbandela kwaye ekugqibeleni kuqinisekiseni intsebenziswano phakathi kwabantu nezilwanyana zasendle. Ukulima nokufuya ngendlela egqibeleleyo ‘ehambelana nendalo’ akuthinteli ngqzulwano kuphelo, koko kumatyeli amanizi, kwandisa imveliso kunye nezina lempumelelo yomsebenzi wokulawula.

Njengoko abantu namafama bephila kule nkqubo yendalo abantu ababelana ngayo nezilwanyana zasendle, amafama adlala indima ebalulekileyo ekukhuthazeni ukuhlala kunye phakathi kwabantu nezilwanyana zasendle, kunye nokuqinisekisa ukuba iinkqubo kunye neenkono zendalo zilondolozelwa ingomso. Esi sikhokelo, esenzelwe icandelo lezolimo nokufuya eNtshona Kapa, sikunika ulwazi kunye neengcebiso zokulusombulula ngokufanelekileyo olu ngqzulwano, kunye neendlela zokulawula imfuyo yakho yasefama nezityalo ngendlela ebandakanya izisombululo ezivelela iinkalo ezahlukeneyo.



Ungqzulwano phakathi kwabantu nezilwanyana kunye nentsebenziswano

Ungqzulwano phakathi koluntu nezilwanyana yenye yemingeni etshisa ibunzi ejongene nolondolozo lwezityalo nezilwanyana ezahlukeneyo (biodiversity) nophuhliso oluzinzileyo, kwaye lo mngeni uye usanda kwihlabathi lonke ngokwesihlandlo nobukhali njengoko izilwanyana noluntu beqhubeka ukukhuphisana ngendawo, izixhobo kunye neendawo zokuhlala. Kwinkomfa yehlabathi malunga neepaki yango-2004, kwathiwa: “Ungqzulwano phakathi koluntu nezilwanyana lwenzeka xa iimfuno nezinto ezenziwa zizilwanyana zibe nefuthe elibi kwiinjongo zoluntu okanye xa iinjongo zoluntu zibe nefuthe elibi kwiimfuno zezilwanyana.” Le ngxabano ingenzeka ngenxa yokuba ingwe ihlasela izilwanyana ezifuywayo okanye inkawu iphangela izityalo zomfama, ngenxa yokungenisa izilwanyana ezifuywayo kwindawo ekuthiwa yindawo yokuhlala yesilwanyana esizingelayo okanye ukufumana amasimi apho kwakukho intlambo yendalo. Ngamanye amaxesha, ungqzulwano luyanda xa umntu okanye uluntu luzama ukubulala ingwe okanye inkawu, okanye umntu abengqwalalala kwabasemagunyeni abaqhuba umsebenzi wokulondolozo izilwanyana nendawo ezihlala kuyo.

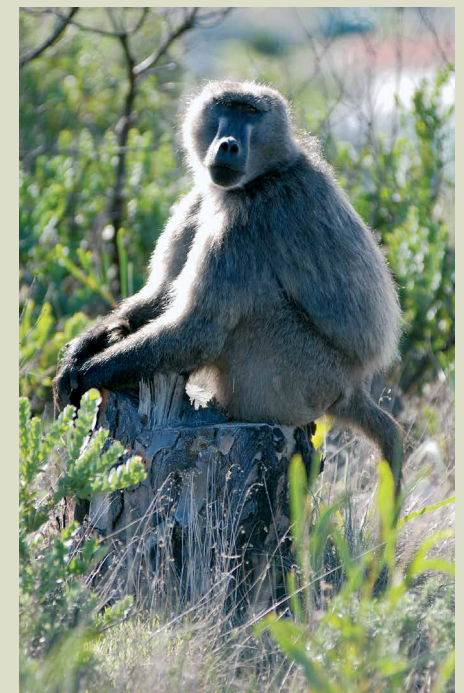
Kwindawo yokulima, ukuqhubeka kongqzulwano kunokuphuma nesisombululo esinye kwezi ziphumo zintathu:

1. Umfama “uyaphumelela” kwaye izilwanyana ziyagqulwa/ziyabulawa kwindawo ethile,
2. izilwanyana “ziyaphumelela” kwaye umfama akakwazi ukuqhubeka nokulima ngendlela enenzuzo okanye
3. kusetyenziswa iindlela zokuthomalalisa ungqzulwano ezivumela ukuba kubekho ubudlelwane obunoxolo phakathi komfama nezilwanyana kumhlaba wakhe.

Ingcamango yentlalontle yezilwanyana, eyaziwa ngokuba luhlobo lwesidima sezilwanyana, nayo inxulumene neemeko zongqzulwano phakathi

koluntu nezilwanyana. Intlalontle ibandakanya imeko yezempilo kwezindalo equka isimilo, umzimba, nakwiimvakalelo zomzimba wesilwanyana, kunye nobuchule bazo bokuhambelana nokusingqongileyo kwazo. Into nganye kwezi inokuchaphazeleka kakuhle okanye kakubi zizinto zoluntu, ngoko kubalulekile ukudibanisa nokuwuthathela ingqalelo umba wentlalontle yoluntu, izilwanyana ezifuywayo, nezilwanyana zasendle kuwo wonke amanqanaba wolawulo longqzulwano.

Ungqzulwano phakathi kwabantu nezilwanyana yingxaki entsonkothileyo kwaye inamacala amaninzi afuna ukuqwalaselwa okucingisisekiyo kunye nezisombululo ezintsha. Ukuhlalisana kakuhle akuthethi ukukhetha icala, kodwa kukufumana indawo apho abantu nezilwanyana baphilisa kakuhle.



Indima yezilwanyana zasendle kummandla weefama

Kwindalo esempilweni neyohlukahlukeneyo kwizinto eziphilayo, zonke iindidi zezinto eziphilayo zidlala indima ekhethekileyo egcina ubomi kunye nolungelelwaniso lwendalo. Xa kukho ulungelelwaniso, inkqubo yendalo izinzele kwaye izinzele ngakumbi, iyakwazi ukumelana notshintsho lwemozulu kwaye iqhubeka ibonelela ngeenkono zendalo ezifana nokufumaneka kwengca nezityalo zokutya kwizilwanyana ezifuywayo, amanzi acocokileyo, umhlaba osemphilweni onokuncitshiswa ukhukuliseko lomhlaba, izilwanyana ezisasaza ipoleni/umvuvuzelo phakathi kwezityalo kunye nokuncitshiswa koqhushumbiso lwezilwanyana ezizishabalalisi, njalo njalo, konke oku ngaphandle kokungena ezindlekweni kumfama.

Izilwanyana zasendle zibonelela ngeenkono zenkqubo yendalo

Iinyamakazi, imivunda neembila, umzekelo, zidlala indima ebalulekileyo ekusasazeni imbewu. Zigcina izityalo zengingqi zikwisimo esihle ngokuthi zitye ingca, amagqabi, iimbewu nezinye izityalo okanye uhlaza, nto leyo ithintela ukukhula okungaphaya kwemfuneko. Zikwanika izibonelelo nakwezinye izilwanyana – izibonelelo ezifana nokuba zibe kukutya kwezilwanyana ezizingelayo, nto leyo izenza zingazingeli mfuyo. Iimfene, iinkawu, iintaka neencada zikwazisasazi mbewu ezibalulekileyo, ngokuthi zitye iziqhamo nezinye iindawo zezityalo ziphethe zihambisa imbewu ngenkqubo yazo yokwetyisa. Le nto inceda ekukhuliseni ukwahluka kwemfuzo yengingqi ngokuthi imbewu isasazeke kwiindawo ekude le kwisityalo esikhuphe imbewu yokuqala. Iimfene nazo zisusa amatye endaweni awo njengenxalenye yomkhwa wazo yokuphanda ukutya, ngalo ndlela zithi zifumanise imbewu, iingcambu, ezinambuzane ezifihlakeleyo. Lo nto inceda ulwabiwo lwezityalo ze itshintshe inkqubo yobomi bendalo, nasezifama nakanjalo.



Indima yubangamagosa endalo yezilwanyana ezizingelayo

Iintlobo zezinto eziphilayo zibandakanya izilwanyana ezizingelayo ezinkulu (ezifana neengwe), ezidlala indima ebalulekileyo kwincopho yesondlo sendalo. Zilawula ulungelelwaniso kwinkqubo yendalo ngokulawula amanani ezilwanyana ezifuywayo (ezifana neempunzi, iigrysbok kunye neeklipspringer) kunye nezilwanyana ezincinci ezifuywayo (ezifana nodyakalashwe kunye neengqawa. Izilwanyana ezizingelayo zinciphisa usulelo lwezifo njengoko zihlala zisusa izilwanyana ezibuthathaka okanye ezigulayo kumxhesho wemfuzo. Ezinye izilwanyana ezifana neengcuka ezimdaka ngombala kunye noodyakalashwe zidla izilwanyana ezifileyo, oko kunceda ekuoceni kwaye kunciphisa kusasazeka kwezifo kunye neentlekele zokuhlaselwa ziimpukane nohodoshwe.

Utshatyalaliso lwezilwanyana ezizingelayo lungeziphumo ezingalindelekanga ezininzi. Izilwanyana ezizingelayo namaxhoba azo ziphila kwimeko ezinzileyo kwinkqubo yendalo, kwaye ukususa izilwanyana ezizingelayo kunokuba nefuthe kwinkqubo yolandelelwano lokutya kwezilwanyana. Umzekelo, xa izilwanyana ezizingelayo zinokungabikho, inani lezilwanyana ezitya izityalo liyonyuka, kwaye izityalo zefynbos zingatyiwa ziphele okanye zitshabalale. Into enokulandela emva kokutshabalala kwemithombo yokutya kwendalo, iinyamakazi zingaphumela kwiindawo ekulinywe kuzo zikhangelwa amadlelo okudla, nto leyo eya konyusa umonakalo kwizityalo. Izilwanyana ezincinci ezifana neempuku nezinambuzane nazo ngamaxhoba amakhulu ezilwanyana ezidla ezinye ezifana nodyakalashwe, ingwenkala kunye nengqawa. Apho zithe zatshatyalaliswa khona ezi zilwanyana kungadaleka ukwenyuka kwenani leempuki nto leyo enokwenza umonakalo omkhulu kwizityalo, okanye konakale umhlaba wamasimi ngenxa yokutshatyalaliswa kweengcambu nembewu. Okokugqibela, izilwanyana ezizingelayo zikwakhuphisana, kwaye ukususa izilwanyana ezikhonyayo nezikwincopho yeentlobo zezilwanyana kungakhokelela ekenyukeni kwezilwanyana ezidla ezinye ezincinci.

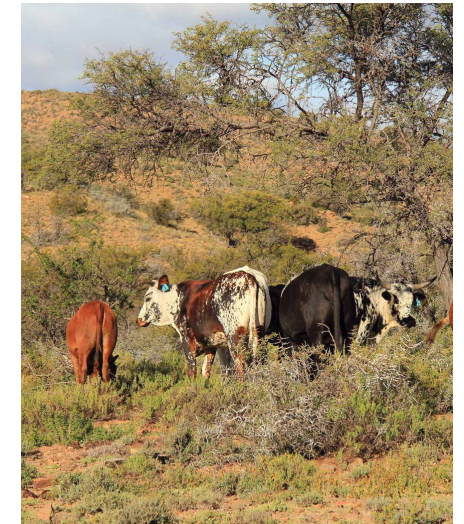
Imigaqo egqibeleleyo yokunciphisa amathuba ongquzulwano

Ngokuphangaleleyo, eyona ndlela ingcono yokunciphisa ungquzulwano kukuthintela ilahleko naphambi kokuba yenzeke. Amanyathelo ajolise ekuthinteleni okanye ekunciphiseni ilahleko adla ngokungabizi mali engako xa ethelekiswa namanyathelo okulungisa umonakalo. Nangona kubonakala ikukuziphungulela umsebenzi ukungathathi manyathelo kwangoko, ulinde ukwenza intshukumo emva kokulahlekelwa yimfuyo, olu hlobo lokwenza lungaphela lukufaka ezindlekweni. Iindlela ezahlukileyo zokuthintela ziyashiyana ngeendleko nendlela ezichaphazela ngayo ulawulo kodwa ziyashiyana ngempumelelo nokusebenza kwazo. Oku kunokuchathazelwa yimeko ethile yobume bomhlaba kunye neemeko

zokulima, kwaye kungazisebenza ngokwahlukileyo kwiifama ezahlukeneyo nokuba zikummandla omnye. Iindlela zokunciphisa amathuba ongquzulwano kufuneka zibonakalise inkathalo, oko kuthetha ukuba kufuneka zibeseemthethweni (khangela “Ukusebenzisana nomthetho” kwiphepha 34), zihambisane nendalo (zinciphise uphazamiseko lwenkqubo yendalo), zibenendonipho nobuntu, kwaye zithathele ingqalelo impilontle yabantu, izilwanyana zasendle kunye nemfuyo. Xa iphunyezwe kakuhle, indlela ‘yokulima nokufuya ngokuhambelana nendalo’ egqibeleleyo ayizukunciphisa mathuba ongquzulwano kuphela, koko iza kunika nezinye izibonelelo ezifana nokonyusa nokwandisa isivuno nemveliso.

Amanyathelo amahlanu akhokelela kulawulo olugqibeleleyo ayakhuthazwa xa ujongene nokusombulula umba wongquzulwano phakathi kwabantu nezilwanyana zasendle:

1. Intsusa yeengxaki ezivelayo kufuneka **iqondwe ngokupheleleyo.**
2. Kufuneka bonke abantu ababandakanyekayo bagcine umoya wokunyamezelana **nentlonipho ngakwizilwanyana** zasendle zonke ezidla umonakalo.
3. Kufuneka **iphononongwe ngokupheleleyo** ingxaki ekhoyo kwaye izilwanyana okanye umonakalo nazo kufuneka **ziphawulwe ngokuchanekileyo.**
4. **Amanyathelo okhuseleko onciphiso** lweengxaki kufuneka alandelwe, alungele ukunciphisa umonakalo okanye iilahleko ezibangelwe sisilwanyana eso siphawuliweyo.
5. **Iindlela zokulawula** ezithile kufuneka ziphunyezwe ukuze kuvelelwe kwaye kusonjululwe oyena ndoqo wengxaki, ngaphandle kokuchaphazela abantu ekungajoliswanga kubo, izilwanyana nendalo nakanjalo.



Abaninimhlaba bamkelekile ukuqhagamshelana nabakwaCapeNature okanye amanye amaziko olondolozo lwendalo akufutshane nabo (khangela “Inkcukacha eziluncedo” kwiphepha 36) ukuze babonise ngendlela eziphangalaleyo nezilungileyo zokulawula ungquzulwano. Kubalulekile ukuba abaninimhlaba namaziko alawula ulondolozo lwendalo badibanise iintloko ngenjongo yokuphumeza imigaqo yolawulo olugqibeleleyo.

Ungquzulwano olunokubakho eNtshona Kapa



ENtshona Kapa, iintlobo eziliqela zezilwanyana ezahlukileyo zingadala ungquzulwano nabantu kwiindawo zolimo nezemfuyo (nakwezinye indawo). Olu luhlu lunikeziweyo aluphelelanga kwaye ezinye iindlela zokunqanda ungquzulwano kufuneka zilungiselelwe imeko nganye, kuqwalaselwa uhlobo olo lwesilwanyana lubandakanyekayo, indawo kunye neemeko zomfama.

Izilwanyana ezitya izityalo nezilwanyana ezitya izinambuzane

Inyamakazi (Ingxungxu, impunzi, ikudu kunye nezinye)



linzuzo zendalo:



Ukutya: Ingca, amagqabi, iintyatyambo, iziqhamo ezincinane kunye nembewu



Indawo: Iyahluka kuhlobo ngalunye lwesilwanyana

- Umkhwa wazo wokuhambahamba ukhuthaza ukukhula kwezityalo
- Zikukutya kwendalo kwezilwanyana ezingelayo
- Ziluncedo ekusasazeni imbewu
- Zihlahlela imizila yokuhamba kuhlaza olushinyeneyo
- Iingqathe zazo zikhupha izondlo eziphinda zibelulutho kwindalo

Iingxaki ezinokubakho:

- Zingahambahamba egadini ze zonakalise izityalo
- Imigibe engekhosethethweni idla ngokubekelwa inyama yasandle kwiindawo apho iinyamakazi zixhaphake khona
- Ukuzebenzisa iindlela zokuzingela ezingavumelekanga kungadala imo yozingelo lweenyamakazi egqithisileyo

Iimpawu:

- Umkhondo kunye nobulongwe obungathi ziingqathane
- Amagqabi amatsha nezityalo ezisantshulayo kunye namahlaha ophukileyo
- Izikroba phantsi kwamacingo okanye ukubonakala kweempawu apho iinyamakazi zitsibe ucingo khona



Iindlela zokunciphisa iingxaki ngokupheleleyo:

- Ucingo olufanelekileyo okanye ucingo lombane olujikeleza umhlaba.



- Izithintelo zokoyikisa izilwanyana, iirediyo, izibane zeLED okanye nezinye izixhobo ezigxotha izilwanyana (istatic repellents)
- Ukusebenzisa izinto ezinganambithekiyo, umz. itshilisi okanye ipelepele efafazwe emagqabini.
- Ukuzebenzisa izinto ezinuka kakubi, umz. ilaphu elinxuzwe kwijeyes Fluid laze laxhonywa ecingweni
- Isikhuseli sezityalo esibiyela iziqu zezityalo



Iinyaniso ezitsala umdla:

- Inyamakazi ingathubeleza phantsi kocingo okanye itsibe ngaphaya kwalo
- Ukonakaliswa kwezityalo kwenzeka ebusuku ubukhulu becala
- Ukubonakala kweentlobo ngeentlobo zeenyamakazi namanani azo aphezulu kungaluphawu olubonisa ukuba inkqubo yendalo okanye ilawulwe kakuhle okanye ifama

Amalulwane



Iinzuzo kwindalo:

- Alawula inani lezinambuzane ezifana neengcongconi nezinye ezizitshabalalisi zezityalo
- Afezekisa indima yazo yendalo yokuhambisa ipoleni (uthuli oluyimvuthuluka yeentyatyambo) nokusasaza imbewu
- Ancedisa ukuhambisa ipoleni ephuma kwimithi nezityalo ezibalulekileyo kwezoshishino



Ukutya: Iziqhamo okanye izinambuzane (kuxhomekeka kuhlobo lelulwane)



Indawo: Amalulwane angafukamela phantsi kwamagqabi okanye amaxolo omthi, kumakroba asematyeeni nasemiqolombeni, nakumaphahla ezakhiwo

Iingxaki ezinokubakho:

- Ukungcola kwamadonga naphatsi kwizakhiwo zeefama
- Umonakalo kwiziqhamo zezityalo (amalulwana atya iziqhamo)

Iimpawu:

- Intshukumo yamalulwane neengqathana ezibonakala kuphahla lwangaphathi lwesakhiwo
- Ingqathana zamalulwane atya iziqhamo ezityabekwe emadongeni namasuntswana omgabho abonakala phantsi kwemithi
- Amalulwane aphila okanye angena ngongqameko lophahla lwesakhiwo
- Amalulwane amancinci atya izinambuzane abonakala ebhabha ngokuhlwa



Iindlela zokunciphisa iingxaki ngokupheleleyo:

- Ukuthintela amalulwane ukuba anganengi kwakhona emaphahleni kufuneka kwenzeka phambi kokuba zizale. Oku kungenziwa ngolu hlobo:
 - o Qaphela iindawo apho zingena okanye ziphuma khona eluphahleni, ngokuhlwa okanye ngentsasa
 - o Faka umnyazi ujinga phambi kwemingxunya yokungena/yokuphuma, kudaleke ilaphu elivaleka livuleka
 - o Eli cebo lenza ukuba amalulwane akwazi ukuphuma eluphahleni kodwa akanakho ukuphinda angene kuba ilaphu lisebenza njengezithinteli
- Faka indlu/ibhokisi yelulwane ukuze zibeneyo indawo yokuzalela ekhuselekileyo
- Fafaza imithi yeziqhamo (ipalm trees, neyellowwoods) ngemichiza ebhaliswe ngokusemthethweni ukuze uthintele ukudaleka kwesiqhamo, nto leyo egcina amadonga akho ecocekile

Kungenzeka ufuno ukutsalela amalulwane kumhlaba wakho ngenxa yomsebenzi wawo obalulekileyo wokusasaza ipoleni nokulawula izinga lezinambuzane. Ubandakanya nezinye iindlela ezifanelekileyo zokunciphisa umonakalo onokwenzeka kumhlaba wakho, landela lamanyathelo:

- Ukubiza amalulwane atya iziqhamo, tyala imithi yomthonyama ayithandayo enjengomgwenya wezinja (Cape ash), itree fuchsia, isundu (date palm) nomgwenya (wild plum).
- Ukubiza amalulwane atya izinambuzane, tyala imithi namatyholo omthonyama ezikhuthaza ubukho bezinambuzane egadini yakho, ngakumbi xa kukho nedanyana lamanzi. Amalulwane anceda ukulawula izinga lezinambuzane ezisegadini yakho, nto leyo encedayo ukuba zingade zibeyingxaki.
- Ukulawula amalulwane atya iziqhamo, tyala imithi yemveli efana nomgwenya wezinja (Cape ash), itree fuchsia, isundu (date palm) nomgwenya (wild plum)
- Ukulawula amalulwane atya izinambuzane, tyala imithi yemveli nezityalo ezibizela izinambuzane egadini, ngakumbi xa zidityaniswe nomthombo wamanzi. Amalulwane aza kuncedisa ekulawuleni izinambuzane, athintele ukuba zide zibeyingxaki



Iincanda zeKapa



Iinyani ezitsala umdla: 

- Amalulwane zezona zilwanyana ezanyisayo ezibhabhayo kwihlabathi liphela
- Amalulwane ayabona
- Amalulwana atya izinambuzane aneendlela ezikhethekileyo nezintsonkothileyo zokusebenzisa isandi ukuzingela izinambuzane ezifana neengcongconi kunye nezinye izinambuzane ezincinci ebumnyameni
- Amalulwane atya izinambuzane anamandla abalaseleyo okutya izinambuzane ezibunzima obulingana nomzimba wazo ngokuphindwe kabini, zizibimbiliza kubusuku nje obunye
- Amalulwane atya iziqhamo athande ukuba makhulu xa elinganiswa namalulwana atya izinambuzane
- Amalulwana atya igazi afumaneka eMzantsi Afrika kuphela kwaye atya iinkukhu neenkomo inkoliso
- Elona lulwane lincinane loMzantsi Afrika yiCape serotine, ebumnzima obuziigram ezintandathu (6g)
- Uninzi lweentshulube ezithwalwa ngamalulwane zinomkhethe kwaye azinakho ukuphila emzimbeni womntu
- Amalulwane anokuphila iminyaka engama-30 ze azale kancinci, ezala intshontsho elinye ukuya kwamabini ngonyaka
- Eyona mingeni ejongene namalulwane kukutshatyalaliswa kwendawo yawo yokuhlala nokutya izilwanyana, izinambuzane okanye iziqhamo ezidibene netyhefu



Ukutya: Izilwanyana ezitya izityalo, zitya iziqu zezityalo eziphantsi komhlaba, iingcambu kunye namaxolo endaweni yamagqabi okanye ingca



Indawo: Zifumaneka kwiindawo ezininzi apho kufumaneka khona indawo yokuzifihla nohlaza olufanelekileyo

Iinzuzo kwindalo:

- Zinceda ekusasazeni imbewu neziqu zezityalo ezingaphantsi komhlaba
- Indlela yazo yokutya ivulela ithuba lokufumaneka kokutya lula nakwezinye izilwanyana

lingxaki ezinokubakho:

- Zingadala umonakalo kwizityalo zegadi okanye kwiingcambu zezityalo
- Zingonakalisa imibhobho yamanzi eyenziwe ngePVC nemijelo
- Zomba imingxuma ekhokelela kwiitonela ezininzi ezinokonakalisa iindlela zasefama okanye izithuthi
- Imigibe engekho mthethweni idla ngokubekelwa inyama yasendle kwiindawo apho iinyamakazi zixhaphake khona



limpawu:

- Ukubakho kweengqathana, imikhondo yonyawo neentsiba
- Ubungqina bokutyiwa kweziqu zezityalo eziphantsi komhlaba okanye iingcambu obufana nokugrunjwa kwezi zityalo
- Amaxolo akrekrethwe emithini kunye nomnye omonakalo kwizityalo zegadi
- Ukukrekrethwa kwemibhobho yamanzi yePVC



Iindlela zokunciphisa iingxaki ngokupheleleyo:

- Khusela iziqu zezityalo eziphantsi komhlaba ngocingo okanye umnatha wehoko yenkukhu
- Biyela iploti nganye ngemicu yocingo lombane
- Misa ucingo olufanelekileyo (kufuneka ligrunjelwe kubuzulu obungama-300 eemilimitha bomhlaba)
- Gxumeka umbhobho weplastiki kwisithole ngasinye
- Hlala uzilungisa izibiyeli ngokuthi uvale amakroba okanye imingxuma ukuze uthintelele ukutyhoboza
- Kumonakalo owenziweyo kwimibhobho yamanzi yePVC, yombela imibhobho phantsi komhlaba ze ugangathe ngamatye okanye nyusa imibhobho phezulwana kunomhlaba ngokuthi uyibeke phezu kweziqonga okanye kwiipali zocingo esezikho (ezimalunga nama-500 emilimitha phezu komhlaba)
- Shiya amaceba emibhobho emidala engasetyenziswayo ukuze iincanda zikrekrethe yona, uyakube ulahla umkhondo njalo zihambe kude kwimibhobho yamanzi



Iinyani ezitsala umdla:

- Incanda yeKapa yeyona mpuku inkulu eAfrika
- Azizidubulisi iintsiba zazo
- Iincanda ziindadi
- Iincanda zeKapa zihlala ngokwamaqela amancinane eentsapho, kwaye ziphila neqabane elinye kuphela
- Iincanda zeKapa zinamandla okuhamba umgama ongange-16 leekhilomitha zikhangelela ukutya
- Umkhwa wokuxhwithwa kweentsiba ezithengiswa kwicurios ngumngeni oye usanda
- Incanda zeKapa zizilwanyana ezihamba ebusuku
- Amabamba eencanda akayeki ukukhula, kwaye kufuneka zintlantathe izinto ngezinto ukuze ziphungule ubude bamazinyo azo

Izilwanyana ezitya izityalo nenyama limfene neenkawu (ezibizwa ivervet monkeys)



Iinzuzo kwindalo:

- Zinceda ekusasazeni imbewu
- Zikukutya kwezinye izilwanyana ezizingelayo
- Indlela ezitya ngayo ikhuthaza ukufumaneka kokutya kwezinye izilwanyana



Ukutya: Zitya izilwanyana nezityalo, kwaye ukutya kwazo kubandakanya amagqabi, imbewu, iziqhamo kunye nezizambuzane



Indawo: Iimfene zihlala kwifynbos, emathafeni nakwiindawo ezomileyo, naphi na apho kukho amanzi, imithi okanye amawa. Iinkawu zona ziphila kakuhle kuzo zonke iindawo ezinemithi ezifana namahlathi ashinyeneyo, ngakumbi uhlaza olukufuphi nomlambo. Ezi zilwanyana zim-bini ziyakwazi ukuhlala kwindawo enye.



lingxaki ezinokubakho:

- Ukususa amaphahla afulelwe ngengca
- Ukungena ezindlwini/ezigadini
- Ukuthatha ithuba lokugqogqa imigqomo nokufikelela kwiiplooti zemifuno neengqumba zomgquba osisichumisi.
- Iimfene zingadala ilahleko ngokwezimali ngokuthi zitshabalalise izityalo nezakhiwo, kwaye zingamane zibulala imfuyo

limpawu:

- Imizila yeentupha zezilwanyana nobulongwe obobonakala buneeepete zamaqunube okanye imbewu
- Zihambahamba emini
- Zivakala emini nasebusuku
- Impawu zokuzingela zeemfene ziquka:
 - Iimpawu zokulunywa ngamazinyo ezibonakala ngathi kusikwe ngemela
 - Zivamise ukukrazula isisu ukuze zifumane "isisu sobisi" (iabomasum)

lindlela zokunciphisa iingxaki ngokupheleleyo:

- Musa ukushiya iimfene ukutya okanye uziquhelise ukuhlala endaweni enabantu
- Gcina iingcango neefestile zivalwe gingci xa iimfene okanye iinkawu zikho
- Fakela iintsimbi ezithintela ukungena kweemfene ezifestileni (uzigqagqanisa kangange-7cm) ukuba uzigcina zivulekile iifestile
- Fakela imisonto yombane ezantsi kongqameko lophahla okanye ulugqume ngenethi yehoko yeenkhukhu uphahla
- Biyela izakhiwo, imiyezo kunye/okanye izityalo zakho ngocingo lombane olufanelekileyo
- Gquma utshixele ingqumba yomgquba osisichumisi ze uyiphathe ngendlela egxotha izilwanyana zasendle inkukuma yakho (eli cebo lingasebenza ekugxotheni oodyakalashi okanye iingcuka)



libhini ezikhuselwe kwiimfene

linyani ezitsala umdla:

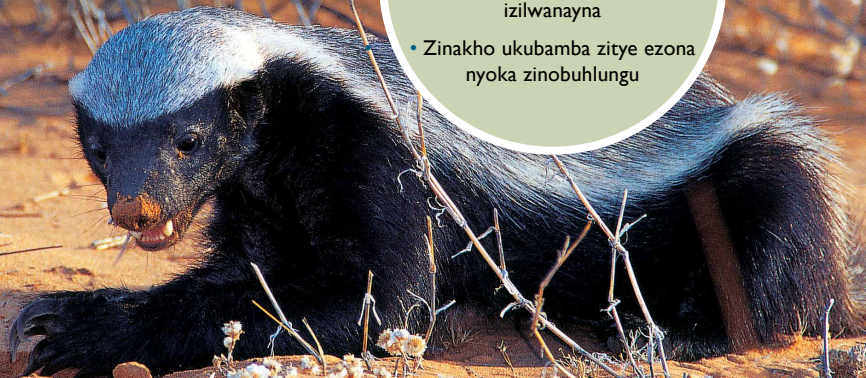
- Inkawu kunye neemfene ngokufanayo zigumba udongwe ze zitye amasuntswana alo ukuze zifumane izakhamziba
- Zizala nanini na enyakeni
- Amazinyo azo azilola ngokwawo
- Iimfene neenkawu zihambahamba emini ze zilale ebusuku.
- Amehlo azo azizibonakude eziluncedo eku-thekeleleni ubunzulu nomgama ngokuchanekileyo
- Ukufundisana kwazo ngokwamaqela okuhlala kunceda ukugcina unxibelelwano lomkhosi wazo
- Iimazi zihlala zihleli kwimikhosi ezizalelwe kuwo, noxa iinkunzi zivamise ukuchithakala ziwushiye umkhosi



liHoney badger

linzuzo kwindalo:

- Zinobuchwephele bokugrumba, nto leyo eyenza ukuba ukutya kufumaneke lula nakwezinye izilwanyana
- Zinakho ukubamba zitye ezona nyoka zinobuhlungu



Ukutya: Zitya izinto ezininzi, eziquka iimpuku, izilwanyana ezirhubuluzayo, iintaka ezincinci, oonomadudwane, izigcawu, iinkume kunye nezinye izilwanyana ezingenamiqolo. Zikwatya iingcambu, iziqu zezityalo ezikhulela phantsi komhlaba, amaqunube kunye neziqhamo



Indawo: Zifumaneka phantse kuzo zonke iindawo, ngaphandle kweentlango zokwenene namahlathi angasemlanjeni akwiindawo eziphantsi.

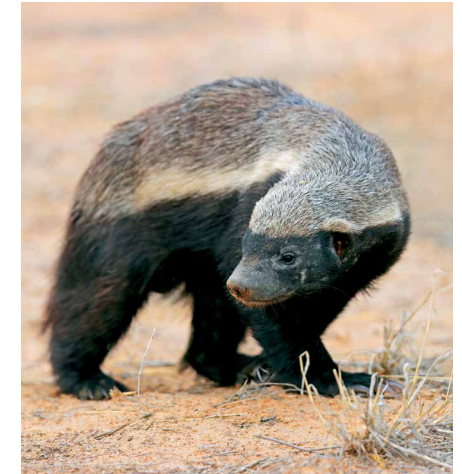
limpawu:

- Izidlu zeenyosi ezonakalisiweyo
- Iimpawu zokuzingela zehoney badger:
 - Olona phawu lokuzingela lwaziwayo kukubulala kwazoamatakane imfuyo emfutshane
 - Kwiimeko ezinqabileyo apho ihoney badgers zihlasela imfuyo enkudlwana efana neegusha, zingaxhakamfula uboya ze ziqalise ukuzitya ziphila, zijolisa ebusweni okanye emagxeni ikakhulu



lingxaki ezinokubakho:

- Zizingela zitye umhlambi weenyosi ze zonakalise izindlu zeenyosi kuba zifuna ubusi
- Zihlasela iimfuyo ngamanye amaxesha, ngakumbi kummandla weOverberg



linyani ezitsala umdla:

- Iihoney badger zingamalolo, nangona iimazi zingahlala kunye nenzala yawo ithuba eliya kwi-18 leenyanga
- Ikhaya leenkuzi lingummandla obanzi
- Iinkuzi ezinobunzima obuphakathi kwe-5-10kg zinkulu kuneemazi kangangesinye esithathwini (1/3), mazi ezo zibunzima ubuqhele ukuba 5-10kg
- Iihoney badger zivamise ukubulawa ngokusetyenziswa ngokungakathali kwetyhefu nezithiyiseli
- Ihoney badger itya ubusi nemibungu yeenyosi, yiyo lonto igama layo lesayensi liyi-Mellivora, gama elo lithetha "isityabusi"
- Ihoney badger inamandla angummangaliso
- Xhasa iBadger Friendly Initiative ngokuthi uthenge ubusi kubathengisi abanempathontle ngakwiibadger kuphela

Ibushpigs



Ukutya: Zitya kwanto, nto leyo iquka iintlobo ezininzi zezityalo, izilwanyana nenyama ebolileyo



Indawo: Ibushpigs zikhetha indawo ezinemithi kwaye zibonakala kwiindawo ezineendawo zokuzifihla kunye namanzi aphanqaleleyo

*Qaphela unquzulwano neempawu ezifanayo zingadalwa yiferal Eurasian wild boar kunye neehagu sazekhaya eziqhwasileyo

lingxaki ezinokubakho:

- Ukonakala kwezityalo ngenxa yendlela yazo yokutya ngobuxelegu
- Ukonakala kwamacingo
- Ukunyathela nokugrumba kwazo oku-nokudala ukhukhuliseko lomhlaba
- Nangona zitya kwanto, ibushpigs bezisoloko zisaziwa ngokuhlasela imfuyo ikakhulu (ngakumbi amatakane egusha kunye namantshontsho enciniba)



Irediyo esetyenziswa njengesithinteli

Iinzuzo kwindalo:

- Zityebisa umhlaba ngokuwuvunguza xa zikhangelwa iziqu zezityalo eziphantsi komhlaba kunye nezinye izityalo nezilwanyana
- Indlela ezitya ngayo inika ukutya nakwezinye izilwanyana
- Ziluncedo ekusasazeni imbewu

Iimpawu:

- Ingca edlakaziweyo nezitya zeentyatyambo ngokunjalo
- Ukubonakala kwengqathana nemizila yeenyawo
- Imigqomo egqogqiweyo
- Iindlela zokungena/zokuphuma ezibonakala ngasemacingweni okanye phantsi kwawo
- Iimpawo zokuzingela okanye zoburhalarhume:
 - Zingabulala amatakane egusha maxa wambi, zishiye lo ndawo ixhafilili, umzekelo, imizimba yezilwanyana exhaxhiweyo okanye erhuqwe imigama emifutshane
 - Zixobula ufele lwemizimba yezilwanyana zisebenzisa impumlo, ngokungathi ziluhlize ngemela ufele
 - Azikwazi ukufikelela kwezinye indawo zenyama njengendlela izidlanyama ezingamachule zikwazi ukufikelela ngayo
 - Amathambo ashiywa enjalo



Iindlela zokunciphisa iingxaki ngokupheleleyo:

- Thintela ukungena kwazo ezigadini ngokuthi umise udonga okanye ucingo olomeleleyo
- Fakela imicu yombane yentsimbi ebiyela iindawo ezichaphazelekayo
- Beka imigqomo engafikeleleki lula kwizilwanyana zasendle ukwalawula inkukuma ngendlela enenkathalo
- Musa ukupha izilwanyana zasendle ukutya
- Umonakalo kwizityalo: sebenzisa iindlela ezininzi zokuthintela umonakalo ezifana nerediyo, izibane ezidanyazayo, ucingo lombane namavumba agxotha izilwanyana

Iinyani ezitsala umdla:



- Ibushpigs zihlala kumaqela eentsapho abandakanya inkunzi elawulayo neemazi eziliqela kunye namantshontsho azo. Ezi hagu zasendle zingamalolo, ngamanye amaxesha ziba ngamaqela amancinane.
- Nangona zivamise ukubhidaniswa nenxagu, ibushpigs zihamba ngobusuku ikakhulu kwaye azinazo intsumpa ezithile ebusweni njengenxagu.
- Ibushpigs zingabangqwalala xa zikhokkonxiwe okanye xa ziziva zingakhuselekanga, ngakumbi xa zihleli namantshontsho azo.



Izilwanyana ezitya ezinye Oodyakalashe omqolo-mnyama

Iinzuzo kwindalo:

- Ngabazingeli besibini nabagqogqi, nto leyo enegalelo ekugcineni idlelo licocekile, ngokuthi batye izilwanyana ezibolileyo
- Banceda ukuthoba inani leempuku nezinambuzane
- Badlala indima ebalulekileyo kwinkqubo yendalo ngokuthi benzele amaxhalanga imiqondiso ebonakalisa ukuba umzimba wesilwanyana esifileyo ukulungele ukutyiwa, awunabungozi
- Kwiindawo apho oodyakalashe basuswe khona, liyanda inani leengqawa, nto leyo ikhokelela kungqulwano
 - Bayinxalenye yebobuchwepheshe obuntsonkothileyo bokulawula uhlaselo lwezilwanyana ezifama



Ukutya: Batya kwanto, kuquka iziqhamo, amaqunube, ingca nezinambuzane. Zizigqogqi zobugxwayiba ezithatha ithuba ezizingela kwanto, zithatha ixhoba ngokokufumaneka kwalo, nangona zikhetha izilwanyana ezifihla inzala yazo.



Indawo: Bakhetha amathafa avulekileyo anamatyholo apha naphaya azindawo zokuzifihla

lingxaki ezinokubakho:

- Bavamise ukulalela amatakane ze bahlasele iigusha neebhokwe ezindala kumaxa athile
- linkomo ezingqengqe phantsi ngethuba zizala zingabangamakhoba okuhlaselwa, nto leyo ingakhokelela kumonzakalo onokusuba ubomi benkomo nethole layo ngokunjalo

limpawu:

- Imizila yeentupha zoodyakalasho zibufana neyezinja kude kubonakale neempawu zeenzipho kuphawu lothupha. Inkangeleko yemizila yeenyawo zabo yimilo esaqanda, enobude obodlula ububanzi
- Iindle labo lifana nelenja, kwaye lidla ngokubanamasuntsu ezinambuzane okanye izityalo, kunye noboya
- limpawu zokuhlasela kukodyakalasho omqolo-mnyama:
 - Oodyakalasho bayalileqa ixhoba labo bema ukuliluma ngelixa bebaleka caleni kwalo, nto leyo ikhokelela kukubonakala kweempawu zamazinyo emihlathini nakwicala lentamo yexhoba. Kumaxa amaninzi, iindlebe zexhoba ziphetha zikrazukile kuloo nkquleqhu. limpawu zamazinyo zingabonakala nakwimilenze engasemva ezantsi kwemibele
 - Badla ngokuleqa isilwanyana esinye ngexesha, ngokwahlukileyo kwezinye iintlobo zeekati nezinja zasendle, ezithi zibulale izilwanyane eziliqela
 - Baqalisa ukutya isilwanyane ephangweni, besebnzisa umlomo omde ukutya amathumbu athambileyo kunye namalungu angaphakathi kuqala, beshiya ufele oluphephezela ngendlela ethile olwenza inkangeleko "yokubaligobhogobho" komzimba wesilwanyana esifileyo
 - Bangatsalela amatakane amancinci kwimiqolomba yabo bephathala amantshotsho abo ukutya baze ngamaxesha athile basuse indawo ezithile zomzimba, umlenze wangaphambili ikakhulu

lindlela zokunciphisa iingxaki ngokupheleleyo:

- Khangela "lingcamango eziphangaleleyo zokulwa nongquzulwano nezilwanyana ezizingelayo" kwiphepha 26 and 28.

linyani ezitsala umdla:

- Udyakalasho omqolo-mnyama sezinye sezona zilwanyana sizingelwayo esitshutshiswayo nesiingqubanyayo nabantu
- Kanye njengokuba igama laso lixela, sine-sali emnyama nomsila onencam emnyama
- Udyakalasho omqolo-mnyama wenza umkhulungwane othile, othi aphendulwe kwangoko ngamalungu osapho kwaye, emva kwexesha uye aphendulwe ngoodyakalasho abakufuphi, beliqela okanye ngabanye.
- Oodyakalasho baqhele ukuhlala ngababini kwaye bahlakandiindawo ezithile abazibangileyo.
- Ubukhulu bommandla wekhaya lodyakalasho abazalela khona ngababini buyashiyana, ukuqala kuma-40 ha ukuya kuma-10 000 ha (iavarage li 1 000 – 4 000 ha) ngokuxhomekeke kwindawo leyo, kwaye lo mlinganiselo unokutshintsha ngokwexesha lonyaka.
- Ooduyakalasho abancinane bexesha lonyaka elidlulileyo bashiyeka bencedisa ekukhuliseni imibundlwana ngamanye amaxesha, "abancedisi"
- Oodyakalasho nabo bayazitya iziqhamo, umzekelo yi-"jakkasbessies" ethiywe ngalo mkhwa



lingcuka ezimdaka



Ukutya: Zitya izilwanyana ezifileyo ikakhulu iintlobo ezahlukileyo zokutya, ezifana nokutya intamo namathambo emizimba yezilwanyana ezifileyo, kunye neentaka, izilwanyana ezirhubuluzayo, amaqanda, izinambuzane kunye namasuntsu ezityalo. Zizingela izilwanyana ezanyisayo ezincinane kumaxesha athile.



Indawo: Zifumaneka kwiindawo ezininzi ezifana namathafa anemithi ukuyotsho entlango

lingxaki ezinokubakho:

- Nangona iingxelo zinqongophele, zingahlasela imfuyo (nangona kungekho siqiniseko sokubulala eNtshona Kapa)
- Zingatyholwa ngokubulala isilwanyana xa zibonwa zisitya, kodwa kube zisifumene sele sifile eso silwanyana



linzuzo kwindalo:

- lingcuka ezimdaka zicoca indalo ngokutya imizimba yezilwanyana ezifileyo
- Zinezisu ezineasidi eninzi ethi icole ukutya okutyhefekileyo ze zithintele ukunwenwa kolwasuleleko lwezifo
- Zikhuphisana nezidlanyama ezincinane ezifana noodyakalasho kwaye zinakho ukugcina amanani azo ephantsi

limpawu:

- linzwane ezigobileyo neempawu zeenzipho ezibonakalayo
- Ubulongwe obumile okwesoseji buze bujike bubemhlophe emva kwexesha ngenxa yezinga eliphezulu lomchiza icalcium
- Ukukhupa – zikhupha incindi ngqindilili, ekhanyayo iphinde ibemnyama ephuma kumadlala omva
- Imiqolomba ephantsi komhlaba ekuhlaza okanye kwiintanda zamatyte, nelindle neentsalela zezilwanyana kufuphi nendawo yokungena
- Kumaxesha anqabileyo apho imfuyo ibulewe, idla ngokubulawa ngokukroboza umphezulu wokhakhayi

lindlela zokunciphisa iingxaki ngokupheleleyo:

- Khangela "lingcamango eziphangaleleyo okulwazi nongquzulwano nezilwanyana ezizingelayo" kwiphepha 26 and 28.

linyani ezitsala umdla:

- lingcuka ezimdaka zihamba ngobusuku kwaye zilala ndawonye ngexesha lasemini
- lingcuka ezimdaka zikhangelala/ziqokelela ukutya zizodwa, nangona zihlala zingamaqela engcuka ezi-4 ukuya kuma-15
- Amalungu eqela ayasebenzisana ukuze akhusele indawo yawo ze atye akhathalele namantshontsho awo
- lingcuka ezimdaka azenzi mkhulungwane ongxolayo, kwaye ziqhagamshelana ngesivamvo sokuva ivumba ikakhulu
- Ingcuka emdaka idweliswe kuluhlu lwezilwanyana eziPhantse zaseMngciphekweni (Near Threatened) lweIUCN Red List



lintini zeKapa



linzuzo kwindalo:

- Ubukho bazo bubonakalisa kwaye kunegalelo kubomi basemanzini bendalo
- Adala ekwacina imizila ekumathambeka emilambo okanye iindawo ezinamanzi



Ukutya: Zizizingeli ezithatha ithuba zitye iintlanzi, icrustaceans, iamphibians, imolluscs neentaka



Indawo eziyithandayo: Imilambo, imijelo yamanzi, amachibi kunye nemigxobhozo

lingxaki ezinokubakho:

- Ukuhlaselwa kweentlazi okanye iintaka zasekhaya (iinkukhu, amadada, amarhanisi, njl. njl.)
- Ukuhlaselwa kwamatakane amancinane kufuphi namanzi olwenzeka ngamaxesha athile

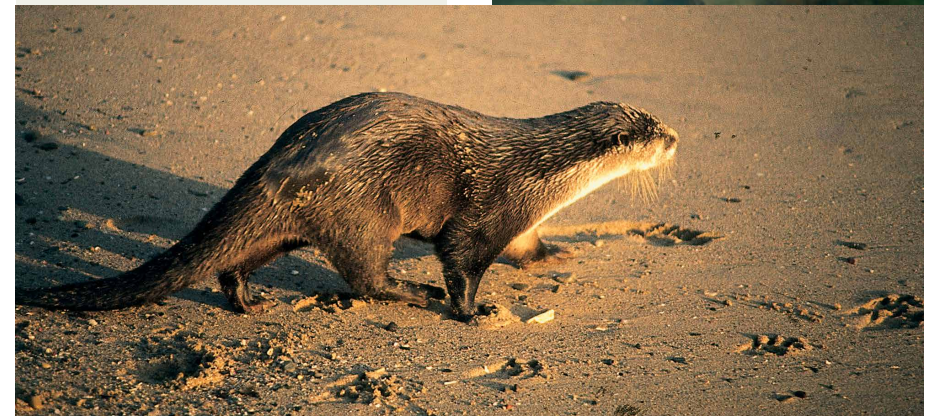
limpawu:

- Imizila yeentupha eneenzwane ezi-5 ezingenanzipho
- Ubulongwe oburhabaxa obuqulethe amakhoba kanonkala, amaxolo entlazi, amathambo neentsiba
- limpawu zokuhlaselela kwentini:
 - Ubungqina bokuhlaselela kweenkukhu okanye iintlanzi
 - limpawu zokutywa ezibonakala entloko nasentanyeni yexhoba
 - Inokubulala amatakane amancinane akufuphi namanzi ngamanye amaxesha, nangina lomkhwa uvamise ukubonakala ngathi bekudlalwa kunokuba bekubulawelwa ukutya



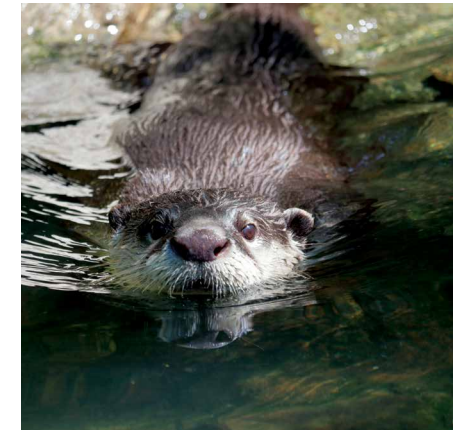
lindlela zokunciphisa iingxaki ngokupheleleyo:

- Lungiselela iintaka zasekhaya ngendawo yokulala ebusuku
- Biyela iindawo zokuqandusela zeentlanzi namachibi ngomnatha nocingo lombane. Grumbela ucingo kangange-50 cm phantsi komhlaba ze uphequlele ngaphandle le ndawo igrunjelweyo kwiengile engama-90° ukuthintela ukugrumbela nzulu nagakumbi
- Beka iimbokotho/amanye amakhulu kumacala omabini ocingo okanye umnatha ukuthintela ukugrumbela nangakumbi



linyani ezitsala umdla:

- Intini yeKapa yeyesibini ngobukhulu kwiintlobo zentini yasemanzini
- lintini zivakala ngesandi esithile somlozi ongxolayo xa zisenza umkhulungwane
- lintini zihlala ngokwamaqela amancinci eentsapho
- lintini zineentupha ezingekhomtyibuli eziluncedo ekubambeni izilwanyana ezihlala emanzini ezikukutya kwazo
- lintini zeKapa zingahambahamba imigama yamathafa ukuze zifumane ukutya
- Intini yeKapa idweliswe kuluhlu lwezilwanyana eziPhantse zaseMngciphekweni (Near Threatened) lweIUCN Red List





Inggqawa



Ukutya: *lingqawa zizilwanyana ezizingela kwanto kwaye zinothotho lwezilwanyana ezikukutya kwazo ezinemizimba emincinane ukuya kwephakathi, eziquka imivundla, iinkawu, iimbila, iintaka, izilwanyana ezirhubuluzayo kunye nenyamakazi encinane, efana netakane lebhadi.*



Indawo: *Umandla osemagqaleni (iinduli neentaba) nasematyholweni*

lingxaki ezinokubakho:

- lingqawa zingabanomkhwa wokubulala imfuyo emfutshane, equka iigusha ezindala ngamanye amaxesha
- Zingabandakanyeka kukubulala okungaphaya kwemfuneko (ukubulala izilwanyana ezingaphaya kwemfuneko)

limpawu:

- lintupha ezifana nezekati ngaphandle kweempawu zeenzipho
- Iindlele ilifana nelekati, kodwa likhulu kunelekati yasekhaya kwaye lungabanoboya



linzuzo kwindalo:

- Zinceda ukulawula ukwanda kwamanani emivundla, iimbila neempuku
- Njengesilwanyana esikwizinga lesibini yenkqubo yolandelelwano lokutyana kwezilwanyana, iingqawa zidlala indima ebalulekileyo yokuzinzisa indalo
- Iingqawa ezilawulayo zinganceda ukugcina ukugxotha ezinye iingqawa nezilwanyana ezizingelayo kulo ndawo

- Iimpawu zokuhlasela kwengqawa:
 - Ixhoba lidla ngokubulawa ngokulunywa kanye kumacala omabini kaqhoqhoqho, ezantsi nje komhlathi
 - Impawu zamazinyo zidla ngoku-ba yimigqobo emibini yamanxeba kumacala omabini womqala okanye uqhoqhoqho
 - Impawu zeenzipho zidla ngokubonakala kumzimba wesilwanyana esifileyo, emagxeni, esiswini okanye kwimilenze yasemva
 - Kumaxesha athile, ixhoba lingarhuqwa imigama emifutshane
 - Imizimba yezilwanyana ingagqunywa ngohlaza okanye umhlaba
 - Kumaxesha athile, indawana yomzimba (umz. intamo) ingasiwa kumantsontso engqawa
 - Iingqawa zidla ngokuhlasela isilwanyane esinye ngexesha, kodwa kuxhaphakile nokubulala izilwanyana ezininzi ngexesha



Iindlela zokunciphisa iingxaki ngokupheleleyo:

- Khangela “lingcamango eziphangaleleyo zokulwa nongquzulwano nezilwanyana ezizingelayo” kwiphepha 26 and 28.

Iinyani ezitsala umdla:

- Iingqawa ngamalolo kwaye zivamise ukuhamba ngambini ngexesha elifutshane lokuzala kuphela
- Iingqawa zinakho ukuhlaselela isilwanyana esikhulu esifana nebhadi okanye ithole leqhude
- Indlebe zayo ezikhethekileyo nezohlukayo zisebenzela ukugqamisa inkangeleko yobuso
- “Uphephezeliso lwendlebe” lusebenza njengomqondiso wokoyikisa
- Iingqawa zizigwenceli ezingochwepheshe kwaye zibalekela emithini xa zileqwa
- Iingqawa zihambahamba ebusuku ikakhulu
- Iinkunzi zibanga indawo kwezinye iinkunzi, kwaye ummandla wendawo zazo uphumela nakoweendawo zeemazi ezincinane. Umhlaba wazo unobukhulu obungange-700 ha ukuya kwi-4 800 ha kumzantsintshona weKapa.
- IiLynx ziikati zasendle ezinemizimba ephakathi nemisila emifutshane zakuMntla Amerika (ibobcat ukutsho), eYurophu, naseAsia.



lingwe



linzuzo kwindalo:

- lingwe zingabazingeli abalalelayo abanamandla abavamise ukuqubula ixhoba kwaye zizingela ebusuku, nto leyo igcina amxhoba azo ethe qwa kwaye elungele indalo
- Njengabazingeli abaphezulu, iingwe zidlala indima ebalulekileyo yokugcina ulungelelwano lwendalo
- Ngamanye amaxesha, zibulala iingqawa, oodyakalashane nezinye izilwanyana ezizingelayo ezinokukhuphisana nazo ekuzingeleni, nto leyo iluncedo ekulawuleni amanani ezilwanyana
- Zisusa izilwanyana ezigulayo nezingenamandla kwinkqubo yendalo ze zithintele ukunwenwa kwezifo zixhasa nokugquba kwezilwanyana ezisemandleni kokwemfuza



Ukutya: lingwe zizilwanyana ezizingela kwanto kwaye zinothotho lwezilwanyana ezikukutya kwazo ezinemizimba emincinane ukuya kwephakathi, eziquka iinyamakazi, iincanda, iimbila, imivundla, nkqu neentaka kunye nezilwanyana ezirhubuluzayo.



Indawo: Zinakho ukumelana nokuhlala kwiindawo ezininzi ezahlukileyo kodwa zidinga iindawo zokuzifihla ezaneleyo. Ikakhulu zikhetha iindawo ezineentaba okanye ezisecaleni kwemilambo ezinohlaza kuneendawo ezingamathafa.

Ingxaki ezinokubakho:

- Zikhetha ukuzingela iintlobo zezilwanyana ezingamakhoba ngokwendalo, kodwa apho zithi zicutheke ezi zilwanyana okanye apho imfuyo ingagadwanga ngokwaneleyo, zingaphetha zitye imfuyo kumaxa athile
- Zinokubulala izilwanyana "ezingaphaya" kwemfuneko (ukubulala izilwanyana ezininzi kunoba zinakho ukuzitya)

Iimpawu:

- lingwe zineentupha ezifana nezekati, ezingqukuva nezingabonakalisi mpawu zazinzipho
- lingqathana zeNgwe ziqulethe uboya obunizi namasuntswana amathambo neempuphu ezintlantlathiwewayo. Ekuhambeni kwexesha, ubulongwe obudala bubaneendawo ezimhlophe ngexa yecalium eziyiquletheyo
- Iimpawu zemikrwelo kumaxolo yemithi emikhulu
- Iimpawu ezikwimizimba yezilwanyana ezifileyo nezikwiindawo eziwungqongileyo:
 - Imigruzuko ezimpawu zokurhuqwa kwexhoba
 - Iimpawu zemigqobho emikhulu ebonakala apho amabamba angene khona emqaleni wexhoba



- Iimpawu zeenzipho zingafumaneka kwimiva okanye emagxeni ezilwanyana ezikhulu zasekhaya
- Zivamise ukutya imiphakathi yemilenze yasemva kuqala zitye umthamo on-gange-1 ukuya kwi-2kg wenyama
- Ziyakuphepha ukutya amathumbu exhoba
- Uboya obuxhwithiweyo ngakumzimba wesilwanyana esifileyo
- Kumaxhoba amancinane, intamo idla ngokuba yophukile



Iindlela zokunciphisa iingxaki ngokupheleleyo:

- Khangela "lingcamango eziphangaleleyo zokulwa nongqzulwano nezilwanyana ezizingelayo" kwiphepha 26 and 28.



Iinyani ezitsala umdla:

- Ingwe inepateni ethile yamabala, hayi amachokoza njengehlosi
- Iingwe zihambahamba ngobusuku kodwa nasemini ngamanye amaxesha
- Umkhulungwane wengwe uvakala ngathi ngumthi osarhwayo
- Iingwe ngamalolo kwaye zihambahamba kwindawo ethile ezezazo ezahluka nangesini. Azihlali kumqolomba omnye, njengoko kusoloko kucingwa, koko, zizifumanela iindawo zokuphumla njengoko zihambahamba zisiya kwindawo zazo zokuzinza
- Ummandla wendawo yenkuzi yengwe eNtsona Kapa uphakathi kwama-10 000 ha ukuya kuma-91 000 ha, ngoxa iimazi zithatha indawo encinane ephakathi kwama-7 400ha nama-20 300 ha
- Akukho zingxelo zokuhlaselwa kwabantu ziingwe zingagqalwanga eNtshona Kapa. Kodwa, ukuba umntu ebenokuyivalela ekoneni ingwe, okanye asondele kumantshontsho emazi, zingabanobungozi kakhulu.
- Ingwe idweliswe kuluhlu lwezilwanyana ezisesiChengeni kwilUCN Red List'

Ezinye izilwanyana ezithi zingquzulane nabantu

- **Izinja ezibhadulayo** eziphetha izizinja zasendle ezithi ziqalise ukuzingela zinakho ukutshabalalisa izilwanyana ezingamakhoba, nto leyo idala ilahleko enkulu yemfuyo ekhokelela kwilahleko yezemali yamafama. Izilwanyana zasendle ezizingelayo ziyatshutshiswa zikwabekwa ityala ngelahleko edalwe zizinja zasendle okanye ezibhadulayo.
- **Iikati zasendle** zingaxuba zizale umxube wazo neekati zomthonyama zaseMazantsi Afrika. Zingosulela ezinye iikati ngezifo ezifana ne- “snuffles” kwaye zinefuthe kwizilwanyana ezincinci ezingamakhoba
- Ungquzulwano **neentaka** lungenzeka ngeendlela eziliqela ezahlukileyo, njengokugqugqisa izityalo. Iroadkill esendleleni neenozo zesivuno eziwela endleleni ngelixa lesivuno zikukutya okufumaneka lula kwaye zingadala ukunyuka kwenani **leen-taka**.
- **ISpur Winged Goose (ihoye) neEgyptian Goose (ilowe)** azithandwa zombini kutsha nje kwiindawo ezivelisa ukutya okuziinkozo kwaye kuyanda ukutshutshiswa kwazo.
- **IEuropean paper neGerman wasps** ziyanda eNtshona Kapa kwaye zinefuthe kwiimveliso zemidiliya emfaxangiweyo (iwayini), iziqhamo eziphuma kwimithi ewisa amagqabi ebusika nasekufuyeni iinyosi.

Abaninimhlaba bamkelekile ukuqhagamshelana nabakwa-CapeNature okanye amanye amaziko olondolozo lwendalo akufutshane nabo (khangela “Inkcukacha eziluncedo” kwiphepha 36) ukuze babonisane ngeendlela ezungileyo zokulawula unquzulwano



Izinja ezibhadulayo



Iikati zasendle



neEgyptian Goose



ISpur Winged Goose



uGwangwa'



IEuropean paper wasp

Iingcamango eziphangaleleyo zokulwa nongquzulwano nezilwanyana ezizingelayo

Ukuhlola imizimba: okuphawula unobangela wokufa

Xa imfuyo ifile, kubalulekile okuchana unobangela wokufa ukuze uthintele ilahleko egqithisileyo. Ukuba unobangela wokufa kukuzingelwa, uhlobo olukucokisekileyo lomzimba nendawo yesehlo aluthinteli ukutyholwa isilwanyana esingesimo kuphela, koko, kukwaqinisekisa ukuba amacebo okunqanda unquzulwano ajongene nesona silwanyana singunobangela. Umzekelo, ukuba uphando olulo alwenziwanga, oodyakalashi bangatyholwa noxa izizinja zasekhaya izilwanyana ezibulele imfuyo.

Ngaphandle kokuzingela, abanye onobangela bokufa okanye ukunyamalala kungaquka izifo, ukungabinandawo yokusithela, imbalela, izityalo ezinetyhefu, ukubiwa, umonzakalo ngokuwa okanye ukuxinga emingxuneni okanye eludakeni. Uninzi lwezi ngozi zinganqandwa ngokuthi kwenziwe uhlengahlengiso olulula kwindlela ekuphathwa ngayo imfuyo. Ngoko ke, amanyathelo asengqiqweni anokuthatyathwa inyathelo ngenyathelo, kufuneka lilandelwe ukuze kuchanwe unobangela wokufa ze kuthatyathwe isigqibo esisiso.

Kucetyiswa ukuba uxele ukuhlaselwa kwemfuyo kwabakwaCapeNature okanye iziko lolondolozo lwendalo zingadlulanga iiyure ezingama-24 senzekile isehlo ukuze bakwazi ukunceda ukuhlola indawo yesehlo nokuchaza esona silwanyana singunobangela.



Indlela yokusondela kumzimba wesilwanyana esifileyo

Xa imfuyo ibulewe, kufuneka lo ndawo iphathwe njengendawo “yolwaphulo-mthetho”, kuqinisekiswa ukuba abutshatyalaliswa kwabungqina obunokunceda ukuchaza isilwanyana esingunobangela.

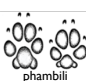









- **Sondela kwindawo yesehlo uqala ngaphandle usondela ngaphakathi**, uqala ngokuhlola indawo ukuze ufumane ubungqina bohlaselo, ze emva koko uqwalaselle umzimba buqu
- **Qala ukhangele kwaye ufote ubungqina** obufana nemizila yeentupha, igazi, ubungqina bokuleqwa okanye ukrukruthwano, uboya, imigruzulo yokurhuqwa, njl. njl., ze ujonge nendlela umzimba ulele ngayo nobukhulu bawo.
- Imizila yeentupha nobunye **ubungqina kufuneka bugciniwe**, kwaye nenani labantu abakwindawo yesehlo kufuneka bagcinwe bembalwa de kube kufotwe bonke ubungqina kunye/okanye kube ingcaphephe esesikweni yaseCapeNature okanye elinye iziko ibe ilugqibile uhlobo.



Xa uhlaselo luqinisekisiwe, ukuqonda indlela eqhelekileyo yokubulala kwezilwanyana ezizingelayo ezahlukileyo (Itheyibhile I) kunganceda ekufumaneni oyena mhlaseleli. Noxa kunjalo, izilwanyana ezizingelayo zizingela ngokuzimeleyo kwaye indlela yokuzingela ingehluka phakathi kwazo. Kubalulekile ukuqaphela ukuba izityanyama ezininzi zikwatya nezilwanyana ezifileyo kwaye into yokuba isilwanyana esizingelayo siteye umzimba wesilwanyana esifileyo ayithethi ukuba sibulelwe siso eso silwanyana.

Kwiimeko apho akukho zimpawu zakulunywa okubuleleyo kumzimba wesilwanyana (intamo, umqala okanye enye indawo) okanye intamo eyophukileyo, kungenzeka ukuba isilwanyana sibulelwe zizizathu zendalo. Iintupha zezilwanyana ezizingelayo ezifunyanwe kulo ndawo zingabonisa ukutyiwa kwezilwanyana ezifileyo kunozingelo oluqhubayo. Ukuhlinda intamo linyathelo elibalulekileyo ukufumanisa iimpawu zokulunywa ngamabamba kuze kuqinisekisiwe ukuba ibiluzingelo unobangela kufunyaniswe nomhlaseleli.

Itheyibhile I – Iimpawu zozingelo lwezilwanyana ezizingelayo ezixhaphakileyo. Icatshulwe kuSchumann (2004)

Izilwanyana	Izinga lokubasengozini	Uthupha	Ukufumaneka kwemzimba	Ubungakanani bekhobha Typical prey size	Iimpawu zeenzipho	Isisu	Uphawu lwamazinyo	Ububanzi bophawu lokulunywa	Indawo ezityiweyo	Amathambo	Obunye ubungqina
Inja	10	 phambili emva	Naphi	0-40kg	Azikhohlo	Sityiwe kwezinye iindawo	Kwiindawo zonke	36-58mm 2-3 yeminwe		Amathambo amade antlantlathiyeyo/ atiyiweyo	Iwulu, uboya, isikhumba, iintsalela ezisasaziweyo; akukho phawu emqaleni
Inggawa	10	 phambili emva	Ematyhohweni okanye engceni	10-25kg	4 ezimfutshane	Siphelele	Emqaleni okanye emqolo ikakhulu	36-58mm 2-3 yeminwe		Iincam zeembambo zintlantlathiyeyo	Uboya, iwulu zisasaziwe, ulusu okanye imiphakathi
Utyakatshe omopolomnyama	10	 phambili emva	Naphi	0-50kg	Azikhohlo	Sityiwe kwezinye iindawo	Entanyeni nakumhlathi wangezantsi; kwimilenze yasemva yamaxhoba amakhulu	19-21mm 3/4 -1 yeminwe		Iincam zeembambo zintlantlathiyeyo	Ubuso neendlebe zintlantlathiyeyo okanye zikrazulwe; imilenze yangaphambili ingabe ityiwe; inyama ityiwe, nesikhumba esivulekileyo, nezixobukileyo
Ingwe	3	 phambili emva	Emithini, kuhlaza okanye emqo lombeni	10-50kg	4 ezimfutshane	Siphelele	Kumva wentamo; umqala	40-46mm 4 yeminwe		Iincam zeembambo zintlantlathiyeyo	Uboya, iwulu ichtyiyeyo yasasaziwe; isikhumba okanye imiphakathi engatyiwangi, iimpawu zokugruruka
Ingcuka emdaka	1	 phambili emva	Ematyhohweni okanye emngxunyeni	0-50kg	Azikhohlo	Sityiwe kwezinye iindawo	Inxeba kumva wokhakhayi; kwimilenze yasemva yamaxhoba amakhulu; esiswini	47-58mm 4 yeminwe		Ukha khayi lukro tyozwe	Iwulu, uboya, isikhumba, neentsalela zisasaziwe; amathambo okhakhayi, iwulu, impuphu, igazi nemiphakathi zisekhona

Iindlela namacebo okunciphisa iingxaki

Iindlela zokunciphisa unguqulwano ezahlukileyo zingasetyenziswa xa uhlaselo lwemfuyo lwenzekile okanye ukuluthintela kwaphela. Unciphiso olululo luthintela ilahleko yemfuyo nemfuneko yamanye amanyathelo axabiswa imali eninzi. Indlela ngaye yokunciphisa inezinto ezintle nezinto ezimbi ngayo (nokuba ngokwembonakalo okanye ngokwezizimali) ngokuxhomekeke kubume bomhlaba nohlobo lwesilwanyana olukhoyo. Ngoko ke, ukuqinisekisa indibaniselo yezicwangciso zokunciphisa unguqulwano kudla ngokuba lelona cebo lisebenzayo.

1. Iindlela zokuthintela umonakalo

1.1. Khusela kwaye ulawule idlelo lendalo ngempumelelo ukuze ugcine impilo nenani lezilwanyana ezizingelwayo zengingqi

- Izilwanyana ezizingelayo zidla ngokukhetha izilwanyana ezingamakhoba emvelo. **Ukuphucula iintlobo ezahlukileyo zezilwanyana ezizingelwayo** yenye yeendlela ezisebenza ngempumelelo ekunciphiseni uhlaselo lwemfuyo. Kuthatha ixesha kodwa kungakuphucula amathuba okuphumelela kwamafama.
- Ummandla wamadlelo emveli** abonelela izilwanyana ezingamakhoba nezilwanyana ezizingelayo ngendawo yokusithela
- Ukugcina izilwanyana zemveli**, ezifana nebhadi, njengesikhoselisi semfuyo kungaluncedo. Amabhadi akwanamatakana kwixesha lonkayo elifanayo nemfuyo yamafama, nangexesha oodyaklashe bebanemibundlwana yabo.
- Ukulima izityalo ngamandla kungangalelo elibi** kukubakho ndawo zonke kweentlobo zezilwanyana nakwimikhwa yaso. Izilwanyana ezingamakhoba emveli zibanokutya okunciphileyo okanye ziqalise okwenza umonakalo kwizityalo yaye zingabulawa ngamafama. Zombini ezi meko zidala ukunciphisa kwamanani ezilwanyana ezizingelwayo nto leyo ingeza ukutya kwezilwanyana ezizingelayo kunciphe.
- Chasa ze uxela ukuthiyiselwa nokuzingelwa okungekhosemthethweni** ukuze uqinisekise ukuba zihlala zikho izilwanyana ezizingelwayo, nto leyo yenza ukuba izilwanyana ezizingelayo zibe nokutya okwaneleyo kwaye zingaxhomekeki kwimfuyo ukuze ziphile.

1.2. Cinga ngamadlelo nangendawo yokugcina imfuyo

- Kangangoko unako, **kuphephe ukusebenzisa indawo ezithe qelele** zifana nemimandla yeentaba ukutyisa imfuyo, kuba ezi ndawo zidla ngokuba zivulekile kwaye zifikelela lula kwizilwanyana ezizingelayo.
- Musa ukugcina imfuyo kwiindawo ezithe qelele **ngaphandle kokhuselo olwaneleyo**.
- Zama ukuqinisekisa ukuba amatakane/amthole emfuyo ahlala **kwiindawo ezikufuphi neyadi yefama** ukuze ukwazi ukuwajonga rhoqo.
- Susa imfuyo **uyise kwiindawo ekhuselekileyo ebusuku** ukuba ukwindawo apho kubonakala khona izilwanyana ezizingelayo.





1.3.Cinga ngokusebenzisa abanyamekeli bemfuyo

- Ukusebenzisa **abelusi abangabantu** yenye yeendlela zonciphiso esebenzayo ukuthintela ilahleko yemfuyo ngexesha lasemini. Abelusi abaqeqeshwe kakuhle bangaluncedo ekukhuliseni imveliso yemfuyo ngokuthi balawule amadlelo ngcono, nokuqaphela izifo kwangethuba. Abelusi abangabantu bangahlanganiswa nezilwanyana ezikhusela imfuyo ukuze ziqatshelwe ngokukhawuleza izilwanyana ezizingelayo.
- **Izinja ezingabakhuseli bemfuyo**, ezifana neAnatolian Shepereds okanye uhlobo iMaluti, zidla ngokuba nkulu ngomzimba kwaye zinoburhalarhume ngokwaneleyo zakuba ndala (ngaphaya konyaka omnye) ukuze zigxothwe izilwanyana ezinkulu ezifana neengwe, ngakum-

bi ebusuku. Zikwaxabisa imali encinci emva kwexesha xa zithelekiswa nabelusi abangabantu.

Kwizilwanyana ezizingelayo ezincinci, uhlobo lwenja encinci ingasebenza kakuhle ngokwaneleyo, ngexabiso eliphantsi. Kubalulekile ukuqaphela ukuba uqeqesho olululo nokuchonga abakhuseli bemfuyo kungathatha malunga nonyaka.

- **Ezinye izilwanyana** ezifana neendonki, ialpacos, iillamas neenciniba nazo zingasebenza njengabakhuseli bemfuyo abayikhusela kwizilwanyana ezizingelayo ezincinane, ngexesha lasemini. Azisebenzi kakuhle ngobusuku. Uninzi lwazo azidingi kuqeqeshwa okanye ukuphiwa ukutya okongezelelweyo.



1.4.Cinga ngokulungelelanisa kwendlela zokulawula imfuyo nezityalo

- Nika ingqalelo **kulawulo oluluqilima**, ngakumbi ngexesha lokuzala kwezilwanyana/lokuvuna
- Nciphisa **ubude bexesha lokuzalwa kwamatakane namathole** ukuze uncihise imigudu yolawulo
- Vumela **ukutya emadlelweni akhusekileyo** ngexesha lonyaka lokuzalwa kwamatakane namathole.
- **Ngqamanisa ixesha lokuzalwa kwamatakane namathole namafama abangabamelwane** ukuze uthintele imeko apho iba ziifama ezithile kuphela ezingamaxhoba okuhlaselela zizilwanyana ezizingelayo
- Lungelelanisa ixesha loluzalwa kwamatakane namathole enyakeni nelo lokuzala lwezilwanyana ezizingelayo.
- **Susa yonke imizimba yezilwanyana ezifileyo namatakane abhadulayo** engahlaselwa ziilwanyana ezizingelayo, ngakumbi apho oodyakalashwe abamqolo-mnyama bekhoyo. Ukususwa kwemizimba kwangexesha kungathintela izilwanyana ezizingelayo, ezithi ngamanye amaxesha zitye inyama ebolileyo, ukuba zithande incasa yenyama yemfuyo.
- **Musa ukunqumla imisila yamatakane amancinci ethafeni**, koko, yenza lo msebenzi ebuhlanti, ngaseyadini yefama. Eli nyathelo liqinisekisa ukuba ivumba legazi alisaleli ethafeni, nto leyo inokuba nomtsalana kwizilwanyana ezizingelayo.
- **Amaqela axubeneyo** eegusha neenkomo anganceda ukuthintela izilwanyana ezizingelayo ezifana nengqawa ukuba zitye iigusha.



1.5.Sebenzisa izithinteli eziphathekayo

- **Ucingo** ludla ngokuba yeyona ndlela isebenzayo ukuvala ngaphandle oodyakalashwe kunezinye iintlobo zeekati zasendle. Ucingo oluvala kakuhle (ngakumbi elombane) kufuneka limane lilungiswa, koba olonakeleyo luvumela oodyakalashwe badakase. Ucingo oloneleyo lungaxabisa imali eninzi kwaye ludinga ukumane lilungiswa kodwa lusebenza kakuhle.
- Gcina imfuyo kubuhlanti **obunganiseni zilwanyana ezizingelayo** ebusuku. Kwimimandla apho kukho iingwe, ubuhlanti kufuneka bube **zizithinteli-ngwe** zokwenene, buvaleke gingci, okanye bube ncingo/amadonga amade nge-2 m bungabinam-ingxuma, kwaye bubenendawo ejingela ngaphandle phezu ukuthintela unku-siba zingene. Susa imithi okanye uhlobo olude kumacala omabini ocingo kwaye lumkela ukusebenzisa iintsimbi ezingaphetha zisebenza “njengeleli”.
- **Iikhola ezikhuselayo** zemfuyo, ezifana neKing kunye neDead Stop, zisebenza ngempumelelo ingakumbi ekuthinteleni iingqawa. Azisebenzi kakuhle koodyakalashwe.





1.6. Sebenzisa izithinteli ezigxothayo

- **Iikhola zentsimbi ekroxomayo** neekhola ezizithinteli zombane zingazigxotha izilwanyana ezizingelayo okwethutyana, ngakumbi ngelixa lokubabuthathaka kwemfuyo njengexesha lokuzala. Izilwanyana ezizingelayo zingade zisiqhele isandi sentsimbi emva kwexesha.
- **Izibane kunye/okanye isandi** esichukunyiswa yintshukumo zingazizithinteli ezisebenza ngempumelelo, ngakumbi njengedlela eyonga imali kodwa zizisombululo zexeshana kude kuvele amacebo onciphiso asisigxina anokusetyenziswa.
- Inkqubela yokuphucuka **kwizithinteli ezisebenzisa ivumba** ikhona, ukuquka ukusetyenziswa ipheronmones okanye ivumba lasandle lesilwanyana ezizingelayo esifanayo okanye olunye uhlobo lwesilwanyana. Kodwa, la mavumba kufuneka emana efakwa rhoqo ukuze ahlale esebenza.

1.7. Qinisekisa uphawule uhlobo lwesilwanyana olungunobangela yelahleko

- Qinisekisa ukuba **ulwazi ngokuchanekileyo (100%) uhlobo lwesilwanyana esizingelayo esingunobangela** phambi kokuba uphumeze iindlela zokuthintela. Oku kubandakanya ukuhlola nokuqinisekisa ngokukhawuleza iimpawu ezikumzimba wesilwanyana esifileyo nendawo yesehlo ukuze usichaze ngokuchanekileyo isilwanyana esingumhlaseleli.
- Sebenzisa iikhamera zendlela **ukujonga ubukho bezilwanyana ezizingelayo**. Ezi khamera zingafakwa nakwimizimba yezilwanyana ezifileyo ukuze kufumanekile ulwazi ngobukho bezilwanyana okanye uhlobo lwesilwanyana esibandakanyekayo, ngakumbi xa kubekho iziganeko uhlaselo lwezilwanyana ezininzi ngaxeshanye. Kubalulekile ukuqaphela ukuba isilwanyana esirekhodwe sisitya isilwanyana esifileyo ingaba sisilwanyana esingumzingeli okwinqanaba lesibini okanye esizityela isilwanyana esele sifile kwaye lo nto ayithethi ukuba siso esibuleleyo.
- **Gcina iinkcukacha ezichanekileyo** zazo zonke ilahleko, ukuquka imihla, amaxesha, iifoto zobungqina, kunye nezilwanyana ezingunobangela. Oku kuza kunceda ukwakha imbali yongquzulwano kuze kuncede ngolwazi ngemikhwa yezilwanyana/izilwanyana ezinokuba ngabahlaseli.



1.8. Musa ukususa izilwanyana ezingeyongxaki

- **Ukuvumela izilwanyana zendawo nezilawulayo** “ezingengomasela emfuyo” ukuba zihlale yindlela esebenzayo yokugxotha izilwanyana ezinokubayingxaki, ngakumbi kwimeko yeenqawa neengwe.
- **Ubukho bezilwanyana ezizingelayo ezithile** kunganceda ukulawula inani lezi zilwanyana. Umzekelo, ingwe ekhoyo engingqini inganciphisa okanye igxotho ingqawa kulo.

Isixhobo sokugada iigusha esikhanyisa izibane kwaye sikhuphe izandi ezinamandla ukuze soyikise kwaye sigxotho izilwanyana ezizingelayo



2. Iindlela zokulungisa umonakalo

Kwezi ndlela zokwenza zilandelayo, kubalulekile ukuqaphela ukuba inkqubo yomthetho, ukuquka ukufaka isicelo sokufumana iphephamvume nokunika nokuxela, kufuneka ilandelwe kuzo zombini iindlela zokulawula neyezilwanyana ezibandakanyekayo. **Ezi ndlela kufuneka zilandelwe xa zigunyaziswe ngumsebenzi waseCapeNature kuphela** (kangela “iinkcukacha eziluncedo” kwiphepha 36)



- 2.1. **Ukufudusa izilwanyana ezizingelayo** kungayimfuneko kumaxa athile anqabileyo, nangona kubalulekile ukuqaphela ukuba olu khetho alusoloko lusebenza okanye lunempahontle. Ukususa isilwanyana esithile kungakufudusela ingxaki kwenye indawo, kwaye kwezinye imeko kungakhokelela ekufeni kwesinye isilwanyana sakule ndawo intsha okanye ekufeni kwesilwanyana esifudusiweyo esingekayiqheli indawo. Oku kungangenxa yokulwelwa ukutya kunye/okanye ukubanga indawo, ukusasaza izifo, ubunzima bokuqhelana nendawo, okanye uxinzelelo. Isilwanyana esithile singazama (ngempumelelo) ukubuyela apho sisuswe khona, ze singquzulane nabantu kunye nemfuyo endleleni yaso.

2.2. Ukufaka ikhola nokulandela

isilwanyana esikrokrelekayo “njengengxaki” kwenziwa ngenzame zokuphumeza “inkqubo yokulumkisa kwangoko”. Nangona kunjalo, le ndlela inokukhokelela ekubulaweni okujoliswe kwisilwanyana ngabaninimhlaba besazi ngeentshukumo zesilwanyana nokususa uxanduva kulawulo lwemfuyo lusisiwa kumphathi wolondolozo lwendalo okufuneka esoloko elandelela isilwanyana. Ngaphezu koko, le ndlela ixhomekeke ekulawuleni iindleko, ekufakeni ikhola okuzindleko nasekuthatheni uxanduva ngempilontle yesilwanyana.



ukusebenzisa izinja ezijoyayo, ezi zinja azivumelekanga ukuba zibulale isilwanyana ezizingelayo. Izinja ezijoyayo eziqeqeshwe kakuhle zingaluncedo ekufumaneni isilwanyana esithile esingunobangela wohlaselo ukuba siso esiquqa sibuyela ekubulaleni imfuyo.

- **Akukhosemthethweni ukubeka imigibe yocingo kunye nezinye izithiyiseli** ezifana neTerminator traps, igin traps nee-“doodslaners”. Ezi ndlela zingenabantu azikwazi kukhetha kwaye zinomngcipheko wokubambisa naso nasiphi na isilwanyana, zidale umonzakalo ombi okanye ukufa kwesilwanyana okuthatha ixesha. Izilwanyana ezizingelayo ezibanethamsanqa lokuphuncuka kwezi zithiyiseli zingafumana umonzakalo okanye ukushunquka kwelungu kwaye ingenza zingakwazi ukuhamba imigama emide, nto leyo inokuzenza sihlale kulo ndawo zixhomekeke kwizilwanyana ezizingeleka lula ezifana nemfuyo ukuze ziphile. Ngaphezu koko, ukusetyenziswa kwekhetshi yokuthiyisela, isithiyiseli esingumgodi okanye uhlobo oluthile lwesithiyiseli sesipringi akukhosemthethweni ngaphandle kwemvume yabakwaCapeNature.
- Naluphi na uhlobo lokubambisa isilwanyana okanye inzame zolawulo ezinobungozi ezijolise kwisilwanyana ekucingelwa kuba ngunobangela womonakalo kufuneka lwenziwe kusetyenziswa **iindlela ezifanelekileyo zokwenza ingxelo nokufaka isicelo sephephamvume kwabase-magunyeni bolondolozo lwendalo**. Oku kuqinisekisa ukusetyenziswa kweendlela ezinempathontle nezinoobuntu, kuthintela ukutshuntshiswa kwesilwanyana esingesiso, kwaye kuphepha ukufudusela ingxaki kwenye indawo, okanye ukuyenza nkulu ingxaki.

2.3. Ukususwa kwesilwanyana esithile esiqinisekisiwe njengonobangela

(ngendlela ezinobungozi, umz. ukuzingela okanye ukuthiyisela nokutofa) kungathomalalisa unqzululwano ukuba isilwanyana esithile siqinisekisiwe njengonobangela welahleko yezilwanyana ezininzi naxa ezinye iindlela zokuthintela zizanywe ngokwaneleyo. Kodwa ke, kubalulekile ukuqaphela ukuba ukususa isilwanyana esinye kuvula ikroba lokuba nezinye izilwanyana zohlobo olunye zilandele ekhondweni. Noxa lungathomalala unqzululwana okwexeshana, kungabakho olunye okanye olugqithiseleyo unqzululwana kwixesha elizayo.

2.4. Ukusebenzisana nomthetho (khangela kwiphepha 34)

- **Iindlela zolawulo ezibandakanya ukusetyenziswa kwe-tyhefu AZIVUMELEKANGA ngokomthetho okanye zidinga iphephamvume elikhethekileyo ukuzisebenzisa ngamaxesha kwimeko azinqabe kakhulu**. Azikhetshi silwanyana sithile ikakhulu ze zibeke ubomi bezilwanyana ezingabandakanyekiyo esichengeni, nto leyo ityeshela ukusombulula oyena ndoqo.
- Ukusetyenziswa **kweqela lezinja ezizingelayo akukho semthethweni nako**. Nangona iphephamvume

Ukusebenzisana nomthetho

“Ukuzingela”, okuthi xa kuchazwa kubandakanywe ukukhangela, ukubamba okanye ukuzama ukubamba naso nasiphi na isilwanyana sasendle kwiNtshona Kapa, kulawulwa ngumthetho iNature Conservation Ordinance No. 19 of 1974.

Phantsi kwalo mMiselo, lityala “ukuzingela” naso nasiphi na isilwanyana ngaphandle kwephephamvume okanye ilayisenisi. Ikwalityala ukusebenzisa nayo nayiphi na yezi Ndlela zilandelayo (ezibizwa “iindlela zokuzingela ezingavumelekanga”):

- Ukuzingela ngomlilo okanye ityhefu
- Ukuzingela ngesikhanyisi esenziweyo
- Ukuzingela okanye ukuzingelela kwindlela kawonkewonke
- Ukuzingela ngoncedo ngezithiyiseli, eziquka isithiyiseli sesipringi, umgibe, igin trap, ikhetshi, umnyazi, isithiyiseli esombelwe emhlabeni okanye intlaka yeentaka
- Ukuzingela ngethuba leyure enye phambi kokutshona kwelanga ntsukuzonke nakwithuba leyure enye phambi kokuphuma kwelanga lemini elandelayo
- Ukuzingela naso nasiphi na isixhobo kwiindawo zikawonkewonke ezikummandla wegonyalalwulo lwengingqi
- Ukuzingela ngompu okhupha iimbumbulu zehlobo lwerimfire cartridge ekumgangatho ongaphantsi kwe- 5,6 mm (.22 calibre)
- Ukuzingela ngompu odubula ngaphezu kwembumbulu ezimbini ngaphandle kokuphinda uwukhokhe ngesandla (umpu ophantse uzidubulele)
- Ukuzingela ngesaphetha
- Ukuzingela ngompu osisithiyiseli okanye owenza umsebenzi ofanayo
- Ukuzingela nangasiphi na isixhobo esitofa isilwanyana ngesiyobisi esinxilisayo, okanye ityhefu
- Ukuzingela ngenja, ngaphandle kokuzingela iintaka okanye ukuyisebenzisela ukulandela okanye ukukhangela isilwanyana esonzakeleyo
- Ukuzingela usebenzisa isikhephe ukuleqa okanye ukubulala iintaka, kwiimeko apho iintaka zibhabhela okanye zikummandla wamanzi

“Iphephamvume lendlela yokuzingela engavumelekanga” elikhethekileyo iyafuneka xa ufuna ukwenza enye yezi ndlela zokuzingela zidweliswe ngentla. Kubalulekile ukuqaphela ukuba nangaphezu kokuba ilayisenisi okanye iphephamvume liyimfuneko phambi kokuqalisa ukuzingela, imvume esibhalweyo esiphuma kumninimhlaba apho uzingela khoba sinyanzelekile. Le mvume ibhaliweyo kufuneka iqulathe oku kulandelayo:

- Igama nedilesi yabo bonke ababandakanyekayo
- Inani neentlobo zezilwanyana zasendle eziza kuzingelwa
- Imihla ekuza kuzingelwa ngayo
- Umhlaba lowo kuza kuzingelwa khona
- Utyikityo lomninimhlaba nomhla wotyikityo

Kubaluleke kakhulu ukuba bonke ababandakanyekayo ekubambiseni okanye ekuzingeleni izilwanyana zasendle kunye/okanye ukuthutha ezo zilwanyana okanye imizimba yazo, ukuba baziqhela-nise nomthetho, nangaphezu kweNature Conservation Ordinance, ngokokuhambelana nomsebenzi abafuna ukuwenza. Ukuba unokuthandabuza, nceda uqhagamshelane neofisi yeziko yolondolozo lwendalo ekufuphi (Khangela iinkcukacha eziluncedo kwiphepha 36) okanye undwendwele capenature.co.za/permits/hunting-permits

Izixhobo ezongezelelweyo

Iincwadi zezikhokelo

- **Guide for Hunters in the Western Cape (CapeNature)** – www.capenature.co.za/uploads/files/Permits/Guide-for-hunters-in-the-Western-Cape.pdf
- **Livestock Predation and its Management in South Africa: A Scientific Assessment (Centre for African Conservation Ecology)** – <https://predsa.mandela.ac.za/predsa/media/Store/documents/PREDSA-eBook-2018.pdf>
- **The Predator-Safe Livestock Guide (Cheetah Conservation Botswana)** – www.cheetahconservationbotswana.org/uploads/6/4/3/3/64330039/predator-safe_guide_book.pdf
- **Predation Management Manual: The farmer's one-stop guide to identifying and managing predators (Predation Management Forum)** – www.sasmallholder.co.za/wp-content/uploads/2018/04/Animal-Predation-Manual.pdf

Umthetho

- **Nature Conservation Ordinance No. 19 of 1974** – https://www.capenature.co.za/uploads/files/Nature-Conservation-Ordinance-19-of-1974_2021-05-31-075828_whkc.pdf
- **Western Cape Biodiversity Act No. 6 of 2021 (to repeal the Ordinance once promulgated)** – www.capenature.co.za/uploads/files/act-no-6-of-2021-western-cape-biodiversity-act-2021.pdf

Izixhobo ezifumaneka kwi-intanethi

- **CapeNature - capenature.co.za**
 - o Permits (overview) - capenature.co.za/permits
 - o Hunting guidelines and permits - capenature.co.za/permits/hunting-permits
- **Cape Leopard Trust - capeleopard.org.za**
- **Endangered Wildlife Trust (EWT) - ewt.org**
 - o Carnivore Conservation Programme - ewt.org/carnivores/
- **International Union for Conservation of Nature - iucn.org**
 - o Best practice guidelines and resources - iucn.org/resources
 - o Red List of Threatened Species - iucnredlist.org
- **Landmark Foundation - landmarkfoundation.org.za**
 - o Human-wildlife conflict mitigation - landmarkfoundation.org.za/human-wildlife-conflict-mitigation



- **NCC Environmental Services - ncc-group.co.za**
 - o Baboon behaviour and conflict mitigation - ncc-group.co.za/information-and-leaflets
- **Predation Management South Africa - pmfsa.co.za**
 - o Knowledge library - pmfsa.co.za/knowledge-library
- **Snare Free - snarefree.co.za**
 - o Anti-snaring information and resources - snarefree.co.za/resources
- **South African National Biodiversity Institute (SANBI) - sanbi.org**
 - o Biodiversity foundations and policies - sanbi.org/biodiversity
- **World Wildlife Fund (WWF) South Africa - wwf.org.za**
 - o Conservation Champions and stewardship programmes - wwf.org.za/our_work/initiatives

Iinkcukacha eziluncedo

Iziko / Inkonzo	Amasebe	Umnxeba
CapeNature Landscape Offices	Head Office (Bridgetown)	087 087 9262
	Garden Route (George)	044 802 5300 / 087 087 3037
	West Coast (Vanrhynsdorp)	087 087 3034 / 087 087 4132
	Cape Karoo (Oudtshoorn)	087 087 3002
	Overberg (Hermanus)	028 314 0062
	Winelands (Jonkershoek)	087 087 4118
	Paarl (Limietberg Nature Reserve)	021 871 1535
Cape Leopard Trust	Community Outreach Officer	082 791 1384
	Conservation Coordinator	060 850 7270

Imithombo

ENDANGERED WILDLIFE TRUST. Bat Conservation Group. Pamphlet.

ENDANGERED WILDLIFE TRUST. 2012. Predators and Farmers. Johannesburg, South Africa

KERLEY, G.I.H., Wilson, S.L. & Balfour, D. (Eds) 2018. Livestock Predation and its Management in South Africa: A Scientific Assessment. Centre for African Conservation Ecology, Nelson Mandela University, Port Elizabeth

LIEBENBERG, L. 2008. A Field Guide to the Animal Tracks of Southern Africa. David Philip Publishers (Pty) Ltd, Claremont, South Africa

MADDEN, F. 2004. Creating Coexistence between Humans and Wildlife: Global Perspectives on Local Efforts to Address Human–Wildlife Conflict. *Human Dimensions of Wildlife*, 9(4), 247–257. doi.org/10.1080/10871200490505675

SCHUMANN, M. (Ed.) 2004. Guide to Integrated Livestock and Predator Management, CCF / RISE Namibia, Cheetah Conservation Fund, Windhoek, Namibia

STADLER, H. 2007. Best Management Practices: Human-Wildlife Conflict Prevention and Management: An Integrated and Holistic Approach to Resolve Conflict between Humans and Wildlife in the Western Cape. CapeNature, Cape Town

WORLD BANK GROUP. 2023. Human-Wildlife Conflict: Global Policy and Perception Insights. URL: worldbank.org/en/programs/global-wildlife-program/brief/human-wildlife-conflict-global-policy-and-perception-insights

Isibhengezo

ICapeNature neCape Leopard Trust azizukuthwaliswa xanduva lazo naziphi na iimeko ezinokudalwa ziintshukumo naziphi na okanye inkqubo zolawulo lwezilwanyana zasendle okanye iindlela ezikhankanyiweyo kwesi sikhokelo. Luxanduva lomfama ngamnye ukusebenzisa izinto ezicetyisiweyo ngokusemthethweni nangokungqongqo nangokwemiyalelo enikeziweyo yokusebenzisa ezo zinto.



Umbulelo

Umbulelo ngeefoto:

ICapeNature neCape Leopard Trust zithanda ukubulela Jaco van Deventer noDr. Joselyn Mormile ngegalelo labo kumxholo wale ncwadana.

Iifoto zeCapeNature okanye imifanekiso yasesitokhweni ngaphandle kwaleyo ichazwe ngezantsi:

Ikhava: Ingada – Martin Carvey, Amatakane neegusha – Jeannie Hayward.

Ikhava yangaphakathi: Lizette Burger.

Iziqukulo: Ilibhokhwe – Jeannie Hayward.

Iphepha 3: Ifoto ephambili – Darryl J Smith; Ifoto elirawundi – Jeannie Hayward.

Iphepha 6: Jeannie Hayward.

Iphepha 7: Ifoto ephambili – Anita Wilkinson;

Ifoto elirawundi – Cape Leopard Trust

Iphepha 10: Incanda – Cape Leopard Trust.

Iphepha 13: Inyathi – Keith and Colleen Begg.

Iphepha 16: Yathin S Krishnappa (Wikimedia Commons).

Iphepha 17: Jaco van Deventer.

Iphepha 22: Ifoto ephambili – Martin Harvey

Iphepha 23: Cape Leopard Trust.

Iphepha 24: Cape Leopard Trust

Iphepha 25: Konke ngeeWikimedia Commons

Ilowe lasejiphetha – Andreas Trepte; Spur Ihoey – Dick Daniels; Ugwangwa – Frank Vassen; Inyosi yePhepha

yaseYurophu – Alvesgaspar; Ikati yasendle – Boksi; Inja elahlekileyo – Ryan Virgo.

Iphepha 26: Cape Leopard Trust.

Iphepha 28: Jeannie Hayward.

Iphepha 29: Ifoto ephezulu – Jeannie Hayward; Inja yeAnatolian – Cape Leopard Trust.

Iphepha 30: Cape Leopard Trust.

Iphepha 31: Iigusha – Jeannie Hayward; Isixhobo sokugada igusha – Cape Leopard Trust.

Iphepha 32: Ifoto engaphezulu – Cape Leopard Trust.

Iphepha 33: Cape Leopard Trust.

Iphepha 38: Cape Leopard Trust



CAPENATURE

IDILESI YOKUHLALA

CapeNature
PGWC Shared Services Centre
Bridgetown
Cape Town

IDILESI YOKUPOSA

CapeNature
Private Bag X29
7766

INOMBOLO YOMNXEBA

087 087 9262

IWEBHUSAYITHI

capenature.co.za

CAPE LEOPARD TRUST

IDILESI YOKUHLALA

Cape Leopard Trust
The Barn
Lasswade Farm, Spaanschemat River Road
Constantia
Cape Town

IDILESI YOKUPOSA

Cape Leopard Trust
PO Box 31139
7945

IDILESI YEIMEYILE

clt@capeleopard.org.za

IWEBHUSAYITHI

capeleopard.org.za